



21 Years of experience in
Thermal Power Plant
construction,
Operation, Annual
Maintenance contracts,
Overhauling & shutdown
jobs

S V INFRATECH ENGINEERS PVT LTD



MISSION

To be the best and most competitive industrial and infrastructure engineering, construction & services company.

VISION

To provide services with:

- Highest levels of workmanship and exemplary speed by continuously enhancing organizational skills through innovation and teamwork.
- Highest level of professionalism, integrity, honesty and fairness in our relationship with our stakeholders and employees.
- Remarkable planning & optimization of resources in the pursuit of excellence.

01

Passion

A duty delivered with passion surges past everything and people who are passionate shall be truly dedicated, hardworking and full of energy. We encourage and provide a platform on priority to those with passion.

02

Diligence

We value every single word uttered to the clients as commitment and we stand by in true spirit with our hard and dedicated work.

03

Excellence

A culture of continuous improvement in our products, processes and services through the strong work ethic and innovative spirit of our employees.

06

Safety

For SVIEPL, safety is the most priority. To this end, it has for several years been working to develop a common health and safety culture based on innovative approaches and best practices across all entities.

VALUES THAT SET US APART

04

Continuous learning

We are convinced that learning is a never-ending process and the Company has an edge over others in its hunger for learning and provides a good opportunity to employees to err, learn and develop.

05

Responsibility

We create awareness among employees to own responsibility and never to pass the buck down the line. We appreciate our employees with accolades and rewards but also make them accountable, to the Company as well as to the society as a good citizen

About us

In the year 2003 when the Indian economy was gaining momentum and the Power sector was undergoing momentous changes, SV Constructions was founded by **Mr. Apparao Vasireddy** with a vision to provide quality services in power sector and to contribute to the growth story of the power sector, later it was promoted as SV Infratech Engineers Pvt Ltd in the year 2015. The company made inroads in a very short time in power sector through sheer dedication, pace in execution and quality of service. A company which was started with a few dozen employees has now grown to be a multinational organization, employing over 150 direct and over 1500 indirect manpower.

SVIEPL commenced its professional journey, undertaking Operation & Maintenance (O&M) jobs and little later entered in to Erection, Testing and Commissioning (ETC) of power projects covering Boiler and its auxiliaries, Steam turbine and Generators and its auxiliaries, Coal handling plant, ash handling plant, ESP, Coal Mills, fans, ducts, Critical, high pressure piping, Cooling Water Piping, sea water piping, Fire fighting system, FGD, fabrication and erection of structural steel etc. The company pursued the journey adding every segment in a power plant from construction to operation, maintenance, refurbishing, overhauling, renovation and modernization of units of almost all types, sizes, capacities, and makes. SVIEPL's presence spans across ETC and O&M of Sub-Critical & Supercritical units, Ultra Mega Power Projects, Heat Recovery Steam Generators (HRSGs), Gas and Steam Turbines Generators and refinery and petrochemical Projects.

SVIEPL has its presence well established in other infrastructure fields such as Civil & Architecture like buildings, drains, approach roads, pavements in power plants, construction of office and storage sheds, commercial buildings, roads and flyover bridges etc.

SVIEPL has established its presence in almost all the south states of India and also spreading all over India. We have proven record of association with established power & infrastructure majors and MNCs.

Remarkable features

Vast experience in Erection, Testing, Commissioning and O&M

Dedicated team for Operation & Maintenance and Annual Maintenance Contracts

Marquee Clientele

STRATEGIC BUSINESS UNITS

Industrial Construction

- Thermal (Ultra, Super & Sub Critical) Power Plants of all capacities
- Boiler & its auxiliaries
- Steam turbine generator & its auxiliaries
- ESP, Ducts & Tanks
- Coal Handling Plant, Ash Handling plant
- FGD & SCR
- Critical Piping, LP Piping
- CW Piping, fire fighting etc

Industrial Services

- Plant Operation & Annual Maintenance
- Capital Repairs
- Upgrades & Retrofits
- Rebuilds & Plant Relocation
- Trouble Shooting
- Comprehensive O&M

Infrastructure Construction

- Foundations & Plant Building
- Concrete pavement and drains
- Residential & Commercial Buildings
- Roads & Bridges

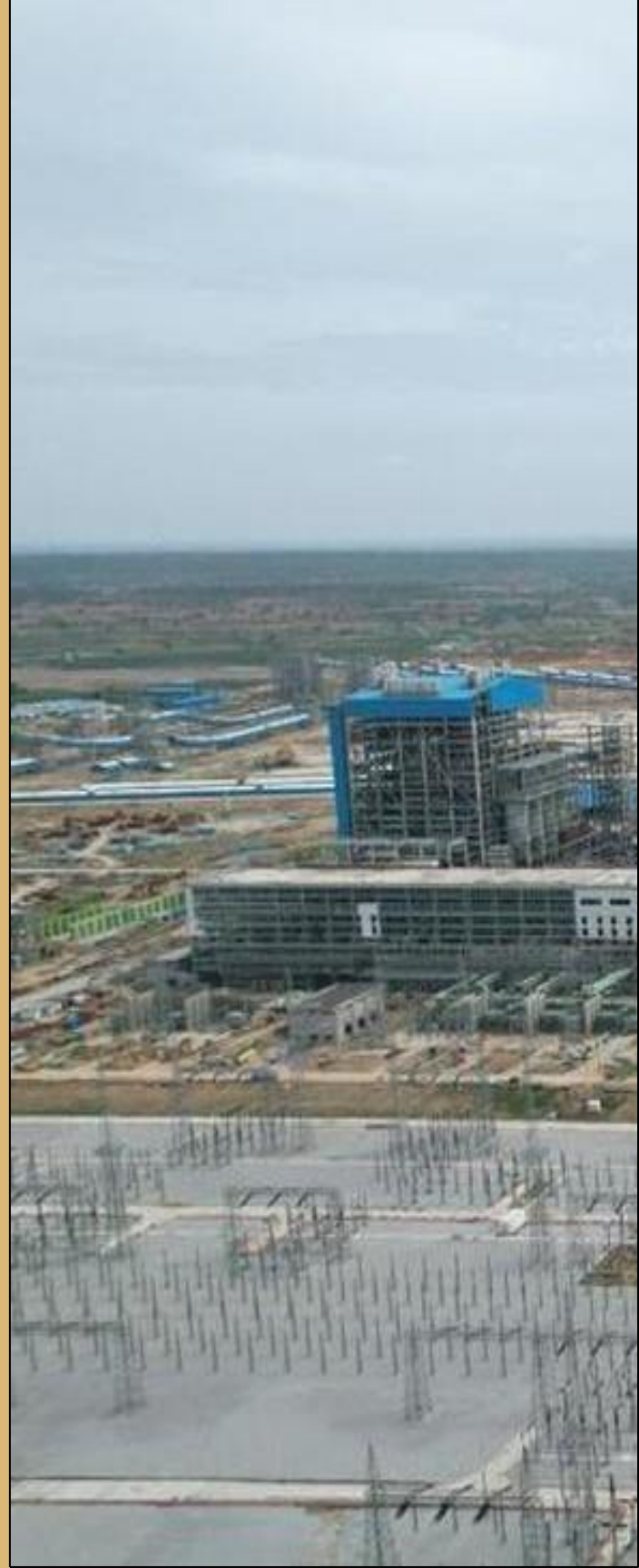


INDUSTRIAL CONSTRUCTION

The Industrial Construction Business Unit covers Erection, Testing and Commissioning (ETC) of projects in Thermal Power, Oil & Gas, fertilizers and chemicals industrial sectors. A robust team consisting of experienced engineers, trained technicians, and skilled workforce is solidly behind in executing projects works at blistering pace and precision.

In the power sector, the Company has executed ETC of coal-based power plants with complete boilers, turbines and generators (ETC-BTG), CHP, AHP works, for various sizes and scale - starting from subcritical to supercritical units and Ultra-Mega Power Plants (UMPPs) with unit capacities ranging from **76MW to 800MW**.

The Company provides integrated industrial construction services to Thermal power projects, steam turbine generators, steam generators including auxiliaries, ESPs, critical piping, LP piping, CW Piping, fire fighting system, Coal Mills, fans, fabrication and erection structural steel works, ash handling plant, coal handling plant, fuel oil systems, FGD and high-pressure piping works.

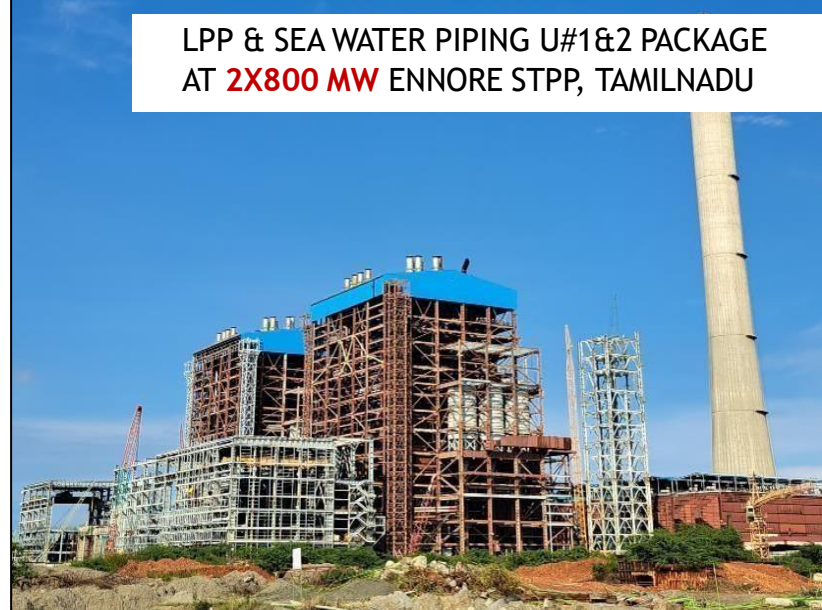




PCP & ESP U#1&3, CWP U#1&2, LPP U#1 to 5 & FGD U#1&2 Packages at **5X800 MW** YADADRI TPS, TELANGANA



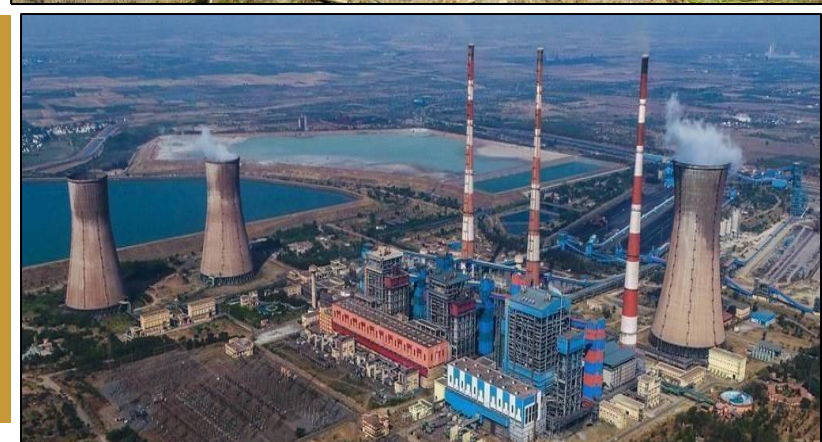
PCP U#1 & COIL MODIFICATION WORKS AT **2X800 MW** RAMAGUNDAM STPP, TELANGANA



LPP & SEA WATER PIPING U#1&2 PACKAGE AT **2X800 MW** ENnore STPP, TAMILNADU

Service Portfolio

- Thermal (Ultra, Super & Sub Critical) Power Plants of all capacities
- Boiler & its auxiliaries
- Steam turbine generators & its auxiliaries
- ESP & its auxiliaries, FGD & SCR
- Fabrication & Erection Balance of Plant
- PCP, LP piping & CW piping
- Refinery and Petrochemicals



LPP U#2 AT **2X500 MW** & PCP & LPP PACKAGES AT **1X700 MW** BELLARY TPS, KUDATINI, KARNATAKA
ANNUAL MAINTENANCE AND ANNUAL OVERHAULING WORKS OF BOILER OF U#1&2 FOR THE PAST 3 YEARS



BOILER AND ESP U#2 PACKAGES AT **4X270 MW** MANUGURU TPP, TELANGANA.
ANNUAL MAINTENANCE AND ANNUAL OVERHAULING WORKS OF BOILER & BOP PACKAGES IN UNIT#1&2



PCP, LPP & CWP U#12 PACKAGES AT **1X800 MW** KOTHAGUDEM TPS, TELANGANA



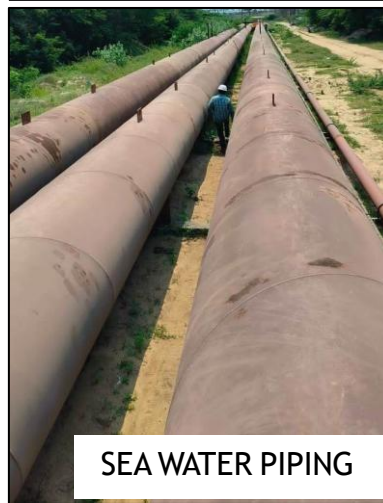
ROTATING PARTS, LPP U#1,3&4, CONVEYER BELTS,
STRUCT STEEL OF CHP AT **4X300 MW** VIJAYNAGAR TPS



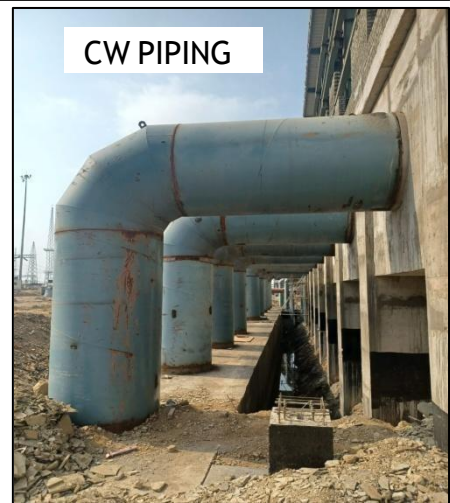
POWER CYCLE
PIPING



BOILER



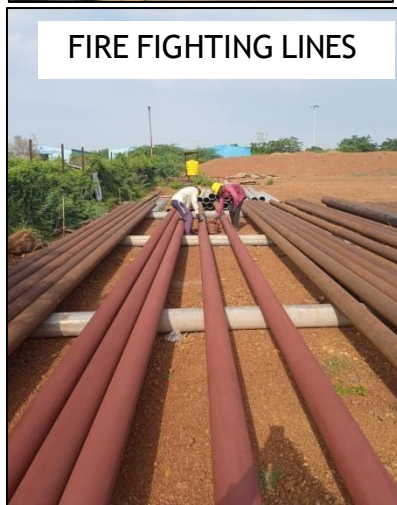
SEA WATER PIPING



CW PIPING



ESP



FIRE FIGHTING LINES



LP PIPING



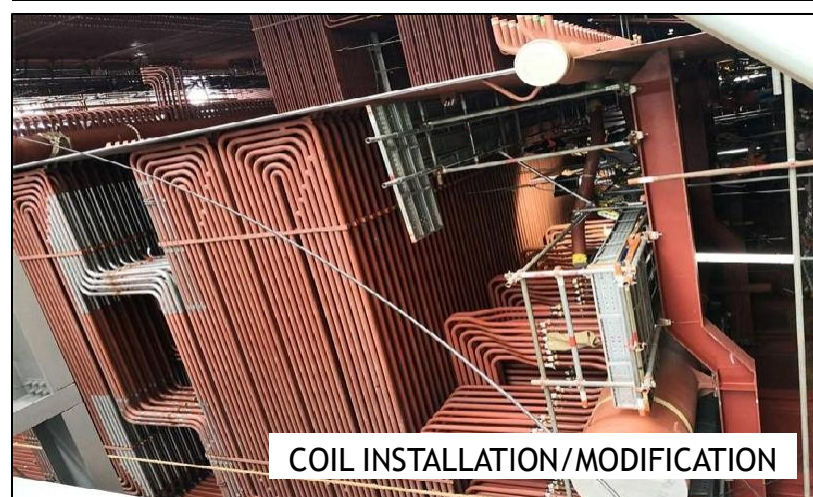
COAL HANDLING PLANT



FGD



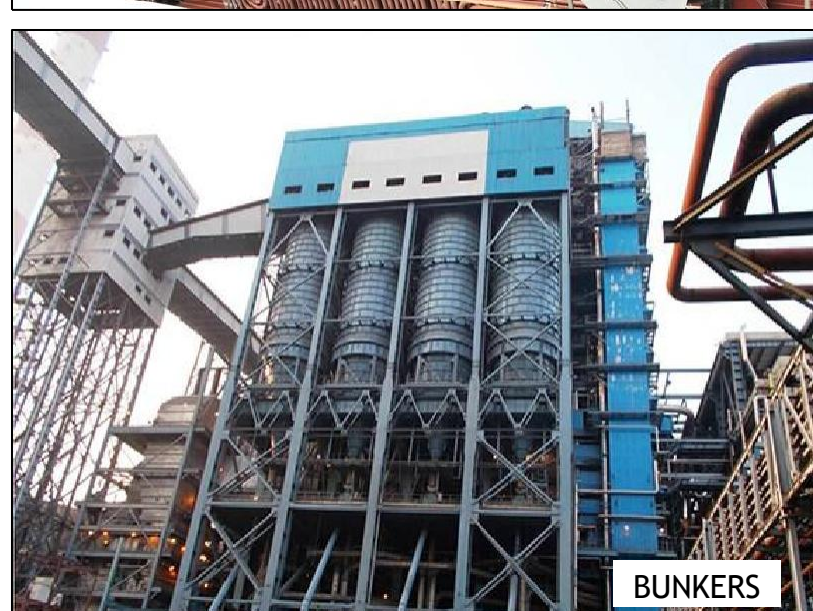
MILLS



COIL INSTALLATION/MODIFICATION



STEAM TURBINE &
GENERATOR



BUNKERS

INDUSTRIAL CONSTRUCTIONS - ONGOING WORKS						
SI No	PROJECT NAME & LOCATION	UNITS BY SVIEPL	SCOPE OF WORK	CUSTOMER	WORK ORDER NO & DATE	TONNAGE IN MT
1	2X660 MW ENNORE SEZ SCTPP, TAMILNADU, INDIA	U#1&2	Erection, testing and commissioning of LP Piping including Sea-water Piping System, Plant water system, DM cooling water system, Instrument & Service Air system, Plant service water and potable water system, PTRO-DM Plant System, Fire Protection system, Pumps & Miscellaneous Equipment's etc.	BHEL PSSR	BHEL: PSSR: SCT: 1999/2022/756 Dated: 10.08.2022	8,909
2		U#1&3	Erection, testing and commissioning of Power Cycle Piping and all associated Piping & Insulation works of Package-A	BHEL PSSR	BHEL: PSSR: SCT: 1940 Pack A (U#1&3)/2021/0648 Dtd: 02.08.2021	8,260
3	5X800 MW YADADRI TPS, TELANGANA, INDIA	U#1&3	Erection, testing and commissioning of ESP & Auxiliaries, Ducts & Dampers, including application of Insulation including supply & application of final Painting for Pck-A	BHEL PSSR	BHEL: PSSR: SCT: 1851:PkgA:2019:1655 Dated: 05.12.2019	24,496
4		U#1,2,3, 4&5	Erction, testing and commissioning of LP Piping including Raw Water Piping System, Plant water system, DM Cooling Water System, Instrument & Service Air system, Plant Service Water and Portable Water System, Pumps & Misc Equipment's, Hangers and Supports, Valves, Miscellaneous Equipment's etc.	BHEL PSSR	BHEL: PSSR: SCT: 1966 Dated: 15.02.2022	4,683
5		U#1&2	Erection, testing and commissioning and Trail operation of Cooling Water & Auxiliary Cooling Water Equipment And Associated Piping for Package-B	BHEL PSSR	BHEL: PSSR: SCT: 1879:PackageB:2020:0573 Dated: 08.09.2020	4,579
6		U#1&2	Erection, testing and commissioning and of the FGD system (Mechanical) related auxiliaries along with the gypsum dewatering system	BHEL PSSR	BHEL: PSSR: SCT: 2136:2024/259 Dated: 20.06.2024	13,545
7		U#1,2,3 , 4&5	Fire Protection System (FPS) works for Stage I (Unit 1&2) & Stage II (Unit 3,4,5) and all other common areas at 5x800MW Yadadri Thermal Power Station, Nalgonda dist, Telangana.	BHEL PSWR	YTPS:SCT:202503-217:Award DT. 08.04.2025	1,622

INDUSTRIAL CONSTRUCTION - MAJOR COMPLETED WORKS					
SL NO	PROJECT NAME & LOCATION	UNITS BY SVIEPL	DESCRIPTION OF WORK	CUSTOMER	WORK ORDER NO
1	4X270 MW Bhadradri Thermal Power station, Manuguru, Telangana, India	UNIT#1	ETC of Boiler and its auxiliaries, Air Pre heaters, Ducts and dampers up to ESP inlet funnel, Fuel piping, Boiler integral piping & assoc valves, fans, PCP, LP piping,	PCP INTERNATIONAL LTD	PCP/DGM/HO/1315 Dated: 11.07.2017
2	4X270 MW Bhadradri Thermal Power station, Manuguru, Telangana, India	UNIT#2	ETC of ESP, duct support structure, ducts and dampers from ESP outlet funnel to chimney, insulation, final painting etc	BHEL PSWR	BHE/PW/PUR/MANUT-BAL ESP U#2/2247/LOA Dated: 08.01.2020
3	2X800 MW UPPUR SCTPP, RAMANATHAPURAM, TAMIL NADU	UNIT#1	ETC of ESP and its auxiliaries, ducts and dampers, ID fan duct supporting structures etc including insulation of ESP inner roof, supply and application of final painting	AKASH ENGINEERING SERVICES	AES:SVIEPL:UPPUR: ESP:E&C:1755:2019:1735 Dated: 06.05.2019
4	1X800 MW Kothagudem TPS, Stage-VII, Telangana, India.	UNIT#12	ETC of Power cycle piping and auxiliary boiler piping package	BHEL PSSR	BHEL:PSSR:SCT:1656 Dated: 27.03.2017
5	1X800 MW Kothagudem TPS, Stage-VII, Telangana, India.	UNIT#12	ETC of LP Piping, piping for fire protection system and fabrication of valves, misc equipments, painting etc	BHEL PSSR	BHEL:PSSR:SCT:1652 Dated: 14.03.2017
6	2X800 MW RAMAGUNDAM TPP, TELANGANA, INDIA	U#1	ETC of Power Cycle Piping, LP piping & its associated items/systems, Hangers & supports, valves etc.	BHEL PSWR	BHE/PW/RGMT-PCP(Unit#01)/1935-LOA dated: 07.01.2019
7	1X700 MW BELLARY TPS, KARNATAKA, INDIA	UNIT#3	ETC of LP piping and its accessories, hangers & supports, valves, Misc equipments/systems and other static equipments including supply & application of final painting	BHEL PSSR	BHEL:PSSR:SCT:1541/05 Dated: 05.05.2014
8	1X700 MW BELLARY TPS, KARNATAKA, INDIA	UNIT#3	ETC of LP piping, ACW piping, Service water piping, TG Aux cooling water, Fire water, SG & TG Cooling water, DM Water, Service air/instrument air	BHEL PSSR	BHEL:PSSR:BTTP:F301 Dated: 08.03.2017
9	1X700 MW BELLARY TPS, KARNATAKA, INDIA	UNIT#3	ETC including supply & application of final for Power cycle piping etc	PCP INTERNATIONAL LTD	PCP/DGM/HO/347 Dated: 19.02.2014
10	2X500 MW BELLARY TPS, KARNATAKA,	UNIT#2	ETC of LP piping & its accessories, hangers & supports, valves, misc equipments/systems and other static	BHEL PSSR	LOI:BHEL:PSSR:SCT:1394 Date:

INDUSTRIAL CONSTRUCTION - MAJOR COMPLETED WORKS					
SL NO	PROJECT NAME & LOCATION	UNITS BY SVIEPL	DESCRIPTION OF WORK	CUSTOMER	WORK ORDER NO
11	1X800 MW Kothagudem Thermal Power Station, Telangana, India	UNIT#12	ETC of LP piping, piping for fire protection system & fab & erection of 2X2500 CUM fire water tanks with associated items/systems, hangers & supports, valves, Misc equipments painting etc	BHEL PSSR	BHEL/PSSR/SCT/1652 Dated: 31.07.2020
12	2X800 MW NTPC RAMAGUNDAM TPS, TELANGANA, INDIA	UNIT#1	Facilitating shot peeing of S40 coils including lowering of coils, dismantling of structures & pressure parts, Res-erection of coils	BHEL PSWR	BHE/PW/PUR/RGMT-BLR PEENING U1/2470/LOA/14821 Dated: 28.09.2021
13	2X800 MW NTPC RAMAGUNDAM TPS, TELANGANA, INDIA	UNIT#1	Modification work of Finish SI-I coil support	BHEL PSWR	BHE/PW/PUR/RGMT-BLR FSH MODIFICATION U1/2418-LOA Dated: 22.05.2021
14	4X300 MW RATNAGIRI TPP, MAHARASTRA, INDIA		Preassembly and erection of GGH for sea water flue gas Desulphurising system of (FGD)	EDAC	EDAC/SVC/FGD/ERE/D16/WO/001 Dated: 08.11.2012
15	4X300 MW VIJAYNAGAR TPS, KARNATAKA, INDIA		Erection of steam turbine, generator, condenser & auxiliaries	JSW PROJECTS LTD	JSWPL/VJNR/PP70MWC/C/701 24/1061 Dated: 17.10.2012
16	1X700 MW BELLARY TPS, KARNATAKA, INDIA	UNIT#3	Erection, testing & commissioning of LP piping and its accessories, hangers & supports, valves, Misc equipments/systems & other static equipments including supply & application of final painting	BHEL PSSR	BHEL:PSSR:SCT:1541 Dated: 31.03.2014
17	4X300 MW VIJAYNAGAR TPS, KARNATAKA, INDIA	UNIT#2	LP Piping erection & Misc Mechanical Equipment erection	JSW POWER LTD	PO/2000123/05-06 Dated: 27.05.2005
18	2X300 MW VIJAYNAGAR TPS, KARNATAKA, INDIA		Rotating machines erection	JSW STEEL LTD	JSW/VJNR/C/36541/2471 Dated: 24.03.2011
19	2X300 MW VIJAYNAGAR TPS, KARNATAKA, INDIA		Erection and commissioning of 9 nos belt conveyer & all equipments	ARUDHRA ENGINEERS	MHD:JSWEL:1521:210 Dated: 27.08.2010
20	2X300 MW VIJAYNAGAR TPS, KARNATAKA, INDIA		Erection of rotating equipment, mill reject system & coal piping	JSW ENERGY LTD	PO/000350/09-10 Dated: 23.06.2009

INDUSTRIAL SERVICES

This Business unit is the premier SBU of SV Infratech Engineers Pvt Ltd., right from the initiation and has made a strong presence in the highly technical field of Operation & Maintenance, Overhauling, Rehabilitation, Modernization, and Renovation of Power plants. This critical space demands a highly compressed timeline for executing jobs and accurate knowledge cum information on different equipment. As an experienced and leading service provider in this segment, the Company has built the best team of skilled technicians and qualified engineers. The Company is equipped with all modern equipment and testing instruments for identifying and rectifying defects in rotating and non-rotating parts of the plants.

The company is capable of providing comprehensive services in Mechanical, Electrical and C&I front and is able to provide versatile services under one roof. Centrally located service headquarters enables the company to attend any emergency at a relatively higher pace reducing the downtime of the equipment and units. The company is also undertaking O&M of many major power plants (AMC) on a long term basis.



AMC OF BOILER & AUX FOR 8 YEARS FROM 2017 AND
ALSO OPERATION SUPPORT IN PROJECT-I **2X660 MW**
NELLORE SCTPP, AP



AMC OF BOILER & AUX FOR 8 YEARS FROM 2017 AND
ALSO OPERATION SUPPORT IN PROJECT-II **2X660 MW**
NELLORE SCTPP, AP



OVERHAULING & SHUTWORKS OF BOILER
U#1,2,3&4of **4X150 MW** SIMHAPURI TPP, AP



Service Portfolio

Plant Operation & Annual Maintenance
Upgrades & Retrofits
Rebuilds & Plant Relocation
Trouble Shooting
Comprehensive O&M



AMC OF TG U#1,2,3&4 FOR 5 YEARS (2013-18)
AT **4X300 MW** RATNAGIRI TPP, MAHARASTRA



AMC 7 YEARS & ANNUAL OVERHAULING AT
2X300 MW VIDYANAGAR TPS, KARNATAKA

INDUSTRIAL SERVICES - ONGOING PROJECTS					
SI No	PROJECT NAME & LOCATION	UNITS BY SVIEPL	SCOPE OF WORK	CUSTOMER	CONTRACT VALUE IN USD
1	2X235 (Net) MW Attarat TPP, Jordan	Unit#1&2	Operation & Maintenance Manpower support for 3 years for plant O&M activities machinery and services works (including preventive, predictive, planned and breakdown jobs) of all the Boiler, TG, MH & BOP and operation services for material handling plant equipment within but not limited to the limits defined.	OMCO (Attarat Operation & Maintenance Company)	1,35,51,057
2	2X660 MW NELLORE SCTPP, ANDHRA PRADESH, INDIA	Unit#1&2	Annual Maintenance Contract of Boiler & Ash handling plant in Project-I for one year upto 2028	SEIL ENERGY INDIA LTD.,	15,77,541
3		Unit#1&2	Annual Maintenance Contract of Boiler & Ash handling plant in Project-II for one year upto 2028	SEIL ENERGY INDIA LTD.,	15,68,932
4	4X270 MW BHADRADRI TPS, MANUGURU, TELANGANA	Unit#1	preventive/periodical Maintanance works on XRP-943 Bowl Mills and sel air fans of Unit-1 for the Fy- 2025-26	TSGENCO	11,654
5		Unit#1	preventive/periodical Maintanance works on Gravimetric Raw Coal Feeders of Unit-1 for the Fy- 2025-26	TSGENCO	14,224
6		Unit#1	Arresting of coal leaks on Coal pipe/its coupling with path welding/sodium silicate, after arranging scaffolding in unit-1 during the year 2025-26.	TSGENCO	8,749
7		Unit#1	Overhaul/servicing/replacement of Journal shaft assemblies, Journal spring assemblies, Journal stop bolts of XRP 943 Bowl Mills Unit-1 for the Fy- 2025-26	TSGENCO	9,628
8		Unit#1&2	HP &LP Welding works for replacement of damaged valves, bend and pipes etc. in Unit-1&2 of TM/Stg-I from 01-04-2025 or from the actual date of commencement of work to the 31.03.2026.	TSGENCO	15,240
9		Unit#1&2	preventive/periodical Maintanance works PA, FD and ID Fans of unit-1&2 as and when required during the year 2025-26.on Gravimetric Raw Coal Feeders of Unit-1 for the Fy- 2025-26	TSGENCO	13,459
10		Unit#4	Replacement of Journal shaft assemblies, Journal spring assemblies, Journal stop bolts of Bowl Mills Unit-4 for the Fy- 2025-26	TSGENCO	17,632
11		Unit#4	preventive/periodical Maintanance works on Gravimetric Raw Coal Feeders of Unit-4 for the Fy- 2025-26	TSGENCO	10,041
12		Unit#4	preventive/periodical Maintanance works on mills, seal air fans and coal pipes of Unit-4 for the Fy- 2025-26	TSGENCO	17,632
13	4X150 MW SIMHAPURI ENERGY LTD, AP, INDIA	Unit#1,2,3, 4	Annual Maintenance Contract of Boiler for 4X150 MW Simhapuri Energy Ltd., Nellore, AP, India	JINDAL POWER LTD	2,65,594
14	5X525 MW JSP, ANGUL, INDIA	Unit#1&2	Manpower support for Operation department (BTG&BOP) AT 2*525 MW, JSP, ANGUL.	JINDAL POWER LTD	1,42,242

INDUSTRIAL SERVICES - MAJOR COMPLETED WORKS					
SL NO	PROJECT NAME & LOCATION	UNITS BY SVIEPL	DESCRIPTION OF WORK	CUSTOMER	WORK ORDER NO & DATE
1	2X660 MW SEIL P2, NELLORE, AP, INDIA	UNIT#1&2	Annual maintenance contract of Boiler & AHP Maintenance	SEMBCORP ENERGY INDIA LTD	4042011623 Dated: 25.01.2022
2	4X300 MW RATNAGIRI TPP, MAHARASTRA	UNIT#1,2, 3&4	Annual preventive maintenance and Breakdown maintenance activities for TG & auxiliaries	JSW ENERGY LTD	JSWELR/2014-15/140473 Dated: 19.07.2014
3	4X300 MW RATNAGIRI TPP, MAHARASTRA	UNIT#1,2, 3&4	Annual maintenance contract for Turbine and Auxillaries and break down maintanance activities	JINDAL ENERGY LTD.,	RATN-ENGY/2015-16/1310000863
4	2X660 MW SEIL P1, NELLORE, AP, INDIA		Service order for AMC of Boiler & AHP maintenance	SEMBCORP ENERGY INDIA LTD	4040012935 Dated: 10.02.2020
5	4X300 MW RATNAGIRI TPP, MAHARASTRA		Annual preventive maintenance services for turbine and auxiliaries area in unit 1,2,3,&4 as per annexure. AMC For PM and BD for TG and auxiliaries	JINDAL ENERGY LTD.,	JSWELR/2014-2015/140473
6	2X660 MW SEIL P1, NELLORE, AP, INDIA	UNIT#1	Boiler U1 Annual overhauling Works	SEMBCORP ENERGY INDIA LTD	40400016438 Dated: 20.10.2021
7	2X660 MW SEIL P1, NELLORE, AP, INDIA	UNIT#2	U#2 BOILER CAPITAL OVERHAULING SERVICES		4040013724 Dated:22.06.2020
8	2X660 MW SEIL P1, NELLORE, AP, INDIA		Additional annual overhauling works		4040017655 Dated: 17.05.2022
9	2X660 MW SEIL P2, NELLORE, AP, INDIA	UNIT#2	Boiler U2 Annual overhauling Works		4042011078 Dated: 30.09.2021
10	4X300 MW VIJAYNAGAR TPS, KARNATAKA, INDIA	UNIT#2	Rate contract for break down/maintenance in Boiler area	JSW ENERGY LTD	JSWEL/SBU2/BPA/1825/09-10 Dated: 24.02.2010
11	2X660 MW SEIL, NELLORE, AP, INDIA	UNIT#1&2	Operation <u>support at SGPL site</u>	SEMBCORP GAYATRI POWER LIMITED	404200929 Dated: 09.04.2016
12	2X660 MW SEIL, NELLORE, AP, INDIA	UNIT#1&2	Operation support of all areas except CHP both units		4040005275 Dated: 09.04.2016
13	2X660 MW SEIL P2, NELLORE, AP, INDIA		Service order for providing mechanical maintenance service for boiler & auxiliaries		4042002267 Dated: 21.12.2017
14	2X660 MW SEIL P2, NELLORE, AP, INDIA	UNIT#1	Additional actual quantities executed during boiler shutdown UniT#1		4042003222/R1 Dated: 30.03.2017
15	2X660 MW SEIL P2,		Service order for providing operation		4042002631

INDUSTRIAL SERVICES - MAJOR COMPLETED WORKSON					
SL NO	PROJECT NAME & LOCATION	UNITS BY SVIEPL	DESCRIPTION OF WORK	CUSTOMER	WORK ORDER NO & DATE
16	2X660 MW SEIL P2, NELLORE, AP, INDIA	UNIT#2	Boiler overhauling works during unit#2 shutdown	SEMBCORP GAYATRI POWER LIMITED	4042003752 Dated: 12.10.2017
17	2X660 MW SEIL P2, NELLORE, AP, INDIA		Service order for providing mechanical maintenance service for boiler & auxiliaries from Apr'17 to Dec'17	SEMBCORP TPCL	4042006743 Dated: 21.12.2017
18	2X660 MW SEIL P2, NELLORE, AP, INDIA	UNIT#1	Boiler Works during U1 capital overhauling	SEMBCORP ENERGY INDIA LTD	4042011164 Dated: 18.10.2021
19	4X150 MW SIMHAPURI ENERGY LTD, NELLORE, AP	U#1,2,3&4	Boiler O&M contract for 12 months from Jan'23 to Dec'23		JPL-SELPUR/F/507 Dated: 30.11.2022
20	2X660 MW SEIL P2, NELLORE, AP, INDIA		Boiler U2 Capital Overhauling Works		4042012245 Dated: 17.05.2022
21	2X800 MW SRI DAMODARAM SANJEEVAIAH TPS, Nellore, AP	UNIT#1&2	Outsourcing services of 70 No's manpower to assist in various shift locations of Unit#I&II of SDSTPS	APPDCL	APPDCL/SDSTPS/F.70No. Manpower/D.No.596/18 Dated: 29.03.2018
22	4X300 MW RATNAGIRI TPP, MAHARASTRA		Service for preventive condition based & breakdown maintenance for TG equipment's, BOP system & equipment's	JSW ENERGY LTD	JSWERL/2010-2011/100813 Dated: 31.07.2010
23	2X660 MW TPCIL COAL BASED POWER PLANT, AP, INDIA	UNIT#1&2	Operation support at site for 2015-2015	TPCL	TPCIL/NLR/MECH/1167 Dated: 01.06.2015
24	4X300 MW RATNAGIRI TPP, MAHARASTRA	U#1,2,3&4	Service for preventive maintenance & condition based maintenance in TG & auxiliared for the year 2012-2013	JSW ENERGY LTD	JSWELR/2012-13/120292-1 Dated: 21.08.2012
25	1X800 MW Kothagudem TPS, Stage VII, Telangana, India.	UNIT#12	Additional storage yard development along with supply, installation & commissioning of associates, illumination & security devices	BHEL PSSR	BHEL:PSSR:SCT:1633 Dated: 01.09.2016
26	1X800 MW Krishnapatnam TPS, AP, India	UNIT#3	Material handling and management works contract that includes receipt, unloading at site stores/storage yard, verification, stacking and preservation of materials/components at stage-II	BHEL PSSR	BHEL:PSSR:SCT:1641 dated: 11.01.2017
27	2X300 MW VIJAYNAGAR TPS, KARNATAKA, INDIA		Unloading/Stores management of BTG	JSW STEEL LTD	JSW/VJNR/C/36541/2325 Dated: 10.12.2010

INFRASTRUCTURE CONSTRUCTION

The business unit for Civil & Architecture works has been providing extensive service from the year 2006 and has executed major projects, critical works with the sole aim of meeting the satisfaction of the clients. The SBU has in its fold highly experienced engineers, professionals, and administrators and developed a well-built team for undertaking projects of any size in power and infra sector keeping schedule and standards.

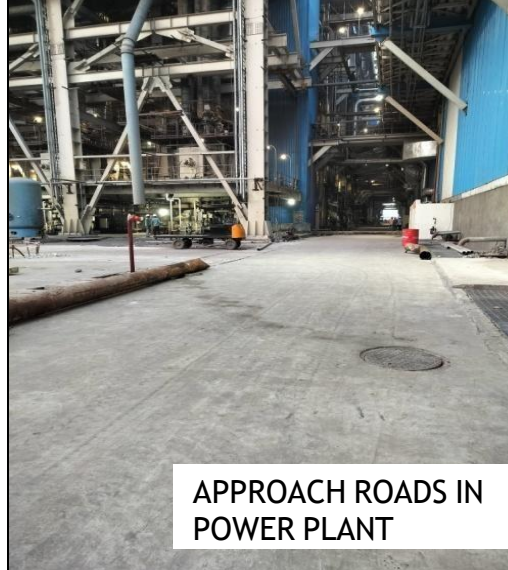
The Company has successfully completed civil works of switch yard, drains, concrete pavement, approach roads, buildings and compound walls in power plant. In addition, it is executing high volume works on Roads, commercial Buildings and bridges etc.

An exclusive subdivision is in place for executing large scale civil foundations, buildings, and architectural works for power plants and other infrastructure projects. The SBU holds highly experienced engineers and professionals drawn from reputed organizations in respective fields and is resourced with modern plant & machinery for timely and quality delivery.

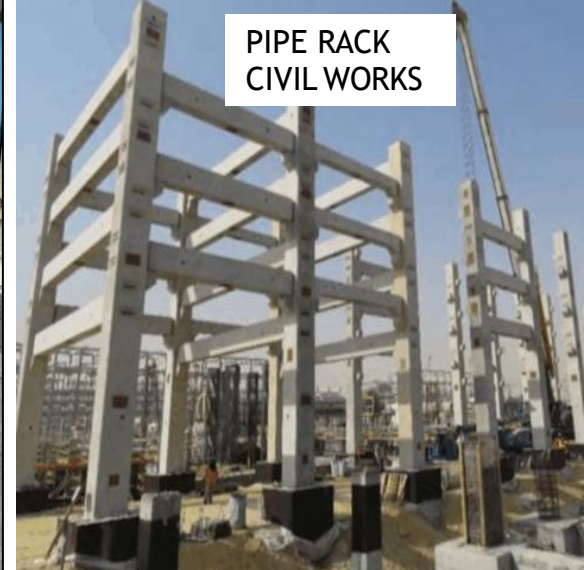




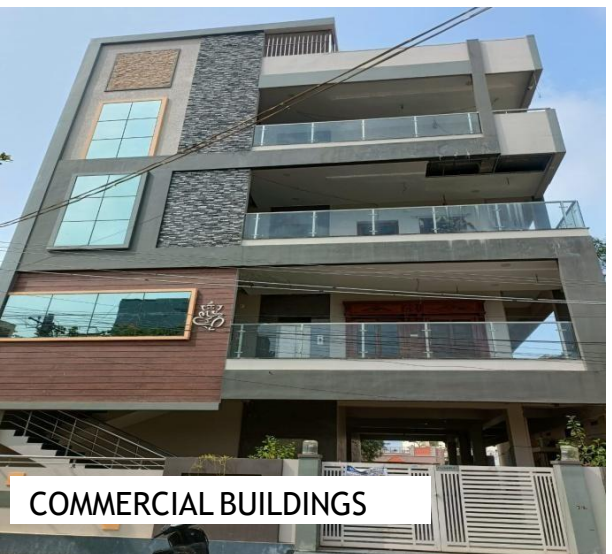
CIVIL WORKS AT
SUBSTATION



APPROACH ROADS IN
POWER PLANT



PIPE RACK
CIVIL WORKS



COMMERCIAL BUILDINGS



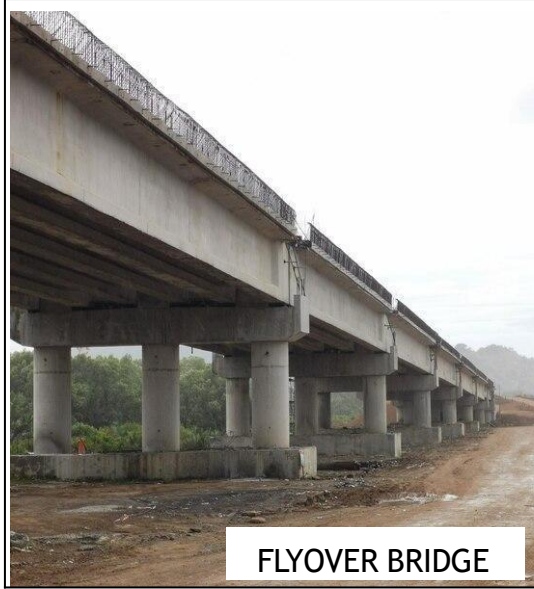
STORAGE SHED



GRADING WORKS



ROADS



FLYOVER BRIDGE



COMPUND WALL

INFRASTRUCTURE CONSTRUCTION - MAJOR COMPLETED WORKS					
SL NO	PROJECT NAME & LOCATION	UNITS BY SVIEPL	DESCRIPTION OF WORK	CUSTOMER	WORK ORDER NO
1	1X700 MW BELLARY TPS, KARNATAKA, INDIA	UNIT#3	Civil works of rail cum road in unloading bay, approach road in CD bay & other miscellaneous works	BHEL PSSR	BHEL:PSSR:BTTP:CIVIL:UNIT III:LOI:706 Dated: 06.07.2015
2	1X800 MW KTPS, PALONCHA, TELANGANA, INDIA	UNIT#1	Construction of compund wall around the abandoned railway track land opposite to Navabharat temple at Paloncha, Bhadradri	TSGENCO	Lr.No.EE/Civil/O&M-III/KTPS/D.No.273/2017 Dated: 13.12.2017
3	4X270 MW Bhadradri Thermal Power station, Manuguru, Telangana, India		Construction of office shed for civil construction circle	TSGENCO	CC-0048/CE/C/T/BTTP/F.CIVIL SHED/D.No.52/17 Dated: 06.02.2017
4	1X700 MW BTPS/KPCL, KARNATAKA, INDIA	UNIT#3	Construction of PT plant near KPCL fire station, Bldg. structure near in & around PT plant, pipe rack civil & structural works, laying of underground pipe line for raw water PT plant area	VOLTAS LTD	DPG/WMBD/KPCL/1008 Dated: 14.03.2016
5	1X700 MW BELLARY TPS, KARNATAKA, INDIA	UNIT#3	TBG balance works of switchyard and control room	BHEL PSSR	BHE:PSSR:BTTP:CIVIL:UNIT III:LOI:792 Dated: 10.08.2015
6	1X700 MW BELLARY TPS, KARNATAKA, INDIA	UNIT#3	Civil works of ESP-Boiler area pavement, drains, approach roads and other misc works	BHEL PSSR	BHE:PSSR:BTTP:CIVIL:UNIT III:LOI:361 Dated: 23.02.2015
7	1X700 MW BELLARY TPS, KARNATAKA, INDIA	UNIT#3	Civil works of pipe/cable rack PR-1 and other misc works	BHEL PSSR	BHE:PSSR:BTTP:CIVIL:UNIT III:LOI:22 Dated: 20.10.2014
8	2X300 MW VIJAYNAGAR TPS, KARNATAKA, INDIA		Construction of RCC supports & road crossing culverts for laying of alternate CW make	JSW STEEL LTD	JSW/VJNR/36541/2018 Dated: 18.05.10
9	2X300 MW VIJAYNAGAR TPS, KARNATAKA, INDIA		Civil works for Construction of 210 MVA Transformer foundations	JSW STEEL LTD	JSW/VJNR/C/36541/1982 Dated: 08.05.2010
10	4X300 MW VIJAYNAGAR TPS, KARNATAKA, INDIA		Civil works for Construction of tower foundations, equipment foundations, trenches	JSW STEEL LTD	JSW/VJNR/C/36541/1090 Date: 29.09.2009

QUALITY ASSURANCE

FIELD QUALITY ASSURANCE

Enhance customer satisfaction through adhering to the requirement of customers, and Quality Management practices based on ASME Standards. Continually improve organizational performance through Employees involvement and training. Continually improve overall performance and management systems/processes, particularly in relation to health, safety, environmental and quality by setting, maintaining and reviewing objectives and targets. Round the clock, strict quality control at critical points is routinely conducted by highly experienced and qualified technical staff. Assure the quality of all equipment, materials, structures, components, and systems utilized in the construction and operation of all types of industrial facilities. Services meet the requirements of the Quality Assurance System including all supporting procedures and work instructions.

SERVICES

- Providing NDT and Heat treatment in all the projects.
- Specialization in advanced technologies in the field of NDT services such as Phased Array ultrasonic testing, Radiography, liquid penetrant testing and Magnetic particle inspection.
- Deliver a quality service that meets our customers' expectations.
- Customer confidentiality and proprietary rights are not violated as a result of the services provided.
- Form an effective communication structure including keeping the client informed and involved at all stages of the project.



QUALITY ASSURANCE

ASME CODE STAMPING

- A - Assembly of power boilers at field sites.
- PP - Fabrication and assembly of pressure piping at field sites.
- R - Metallic Repairs at field locations.

OUR GOALS AND ACHIEVEMENTS

- Handover quality projects on time, within budget and defect free with the provision of all required documents.
- Ensure all employees are aware of their responsibilities within the Quality assurance policy.
- Our company targets to achieve ZERO DEFECTS.

OUR CONTINUOUS EFFORTS TO:

- Facilitate & promote Continual Improvement of the processes and practices resulting in fulfillment of needs and expectations.
- Proactive monitoring which contributes to reduction of non-compliances in Quality and create opportunities for improving Customer confidence.
- Ensure high level of performance of process, products and services by implementing Quality Management System & Quality measures
- Comply with ISO 9001 Quality Objectives.
- Identifying, reviewing and resolving corrective and preventive action of all non conformances and facilitating assurance and excellence in processes and results.



Health & Safety: Putting People First

When it comes to achieving world-class health and safety performance, there's no room for compromise at SVIEPL. And it's not about statistics; it's about keeping people safe. It applies to every employee everywhere, whether walking down an office hallway or working in a power plant.

Safety is our first core value, successfully managing health and safety issues to the lowest possible risk levels is integral to the way SVIEPL does business. SVIEPL continues to be recognized as one of the safest ETC contractors in the Industrial and Infrastructure Construction, and we thoroughly evaluate any cases that occur to immediately identify areas for improvement.

Our goals towards Health, Safety & Environment are:

- Zero Accidents
- No harm to any person
- No harm to property
- No harm to the environment
- No harm to community
- Compliance to Legal Framework. 100% waste Management
- Positive & proactive project social responsibility with respect to the neighboring communities throughout the project duration.

HEALTH SAFETY & ENVIRONMENT



We are committed to developing a caring, preventive safety culture across our organization. Safety drives the actions of every employee at every location, every day. Our people deserve it. Our clients demand it. Our performance depends on it.

“We are Safer Together. That’s the SVIEPL way”.

SVIEPLS Excellence in HSE Leadership: - SVIEPL is widely recognized for its commitment to Health, Safety and Environment. Below are some recent certifications and awards SVIEPL has received for outstanding performance in the area of HSE.

We prioritize the health and safety of our employees. We have developed health and safety policies and have established OH&S function at all sites that facilitates effective implementation of these policies and protocols. We have also implemented OHSAS 18001 as part of our integrated management system. Our communication for safety starts before new employees join the organization and before the on boarding of any contract agency. To continuously improve our health and safety system, on-site training and regular awareness and refresher sessions are conducted for both permanent and contractual employees.

HEALTH SAFETY & ENVIRONMENT



PAST ONE DECADE TURNOVER				
Sl No	Financial Year	Assesment Year	Total Gross Turnover in INR	Total Gross Turnover in USD
1	2013-14	2014-15	164,726,478	1,976,718
2	2014-15	2015-16	241,283,007	2,895,396
3	2015-16	2016-17	122,163,880	1,465,967
4	2016-17	2017-18	198,709,435	2,384,513
5	2017-18	2018-19	439,074,091	5,268,889
6	2018-19	2019-20	279,325,125	3,351,902
7	2019-20	2020-21	255,214,352	3,062,572
8	2020-21	2021-22	252,814,789	3,033,777
9	2021-22	2022-23	396,082,347	4,752,988
10	2022-23	2023-24	483,408,678	5,800,904

DIRECT & INDIRECT MANPOWER			
Sl No	Category	No's	Remarks
1	Staff	305	
2	Highly skilled workers	176	
3	Skilled workers	341	
4	Semi skilled workers	385	
5	Unskilled workers	622	
Total		1,829	

MAJOR T&P		
Sl	DESCRIPTION	QTY
1	150 MT Crane	1
2	100 MT Crane	1
3	80 MT Crane	4
4	Farana crane	3
5	Hydra	10
6	Trailers	8
7	Excavator	3
8	JCB	2
9	Scorpio & Bolero	6
10	500 KVA DG Set	4
11	Winch Machines (10 MT & above)	30
12	Chain pulley blocks (Above 5 MT)	800
13	400 AMPS Welding Rectifiers	600
14	Wire rope pulleys	250
15	D Schakles (Above 20 MT)	650
16	Grinding Machines	250
17	Hydro test pump	5
18	Hydraulic Jacks (50 MT & Above)	20
19	Scaffolding pipes 6 Mtrs	12,000
20	Scaffolding Clamps	24,000
21	Precision equipments (Vernier Calipers, Inside & outside Micrometers (0-1000 mm), Dial guages, Magnetic Stands, Filler guage sets, slip guages, Telescopic guages, Level guages etc	10 sets
22	Condenser tube bullet cleaning pumps	2



CLIENTELE



APCO
ATTARAT POWER COMPANY



OMCO
ATTARAT OPERATION & MAINTENANCE COMPANY

... and still more



CONTACT US

S V INFRATECH ENGINEERS PVT LTD.,

CIN: U45209TG2015PTC098740

Registered & Corporate Office: H.No: 4-2-742/2,
Mamatha Hospital Road, Behind Suryadevara
Function Hall, Khammam – 507 002, Telangana, India.

Tel: 08742 – 297324, Mob: +91 9989305678

E-mail: ho@sviepl.com

md@sviepl.com